



Specialist Resin Flooring Systems for:

SOCIAL HOUSING

- ✓ External Balconies
- ✓ Stairwells & Internal Walkways
- ✓ Entrance Areas
- ✓ External Landscaping
- ✓ Refuse Areas
- ✓ Driveways, Car Parks & Garages

Floor, Wall, Soffit & Ceiling Protection Solutions

With expenditure on repair and maintenance representing a significant slice of annual budgets for social landlords, it is important to ensure that specified materials deliver a good return on investment, lifecycle efficiencies and a positive impact on sustainability.

Selecting durable, wear resistant and environmentally friendly building materials when embarking on renovation works in existing social developments is essential to protecting the building against the adverse effects of weather as well as trafficking and general wear and tear for future generations.

In many scenarios, social housing maintenance must be carried out with minimal disruption to the present occupants and returned to service under a fast turnaround, making renovation projects ever the more challenging.

Flowcrete UK manufactures a range of low VOC, high performance floor, wall, soffit and ceiling protection systems for social housing developments, which have been innovated to deliver accelerated cure times while at the same time strike a balance between aesthetics and functionality.

All systems are installed by a network of approved application teams and come backed by one manufacturer's warranty.

Application Suitability



External Balconies



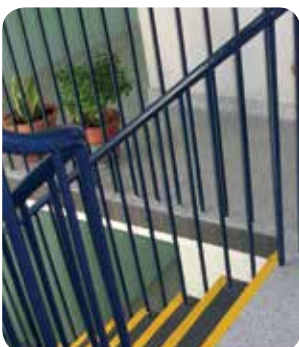
Internal Walkways



Entrance Areas



Driveways



Stairwells



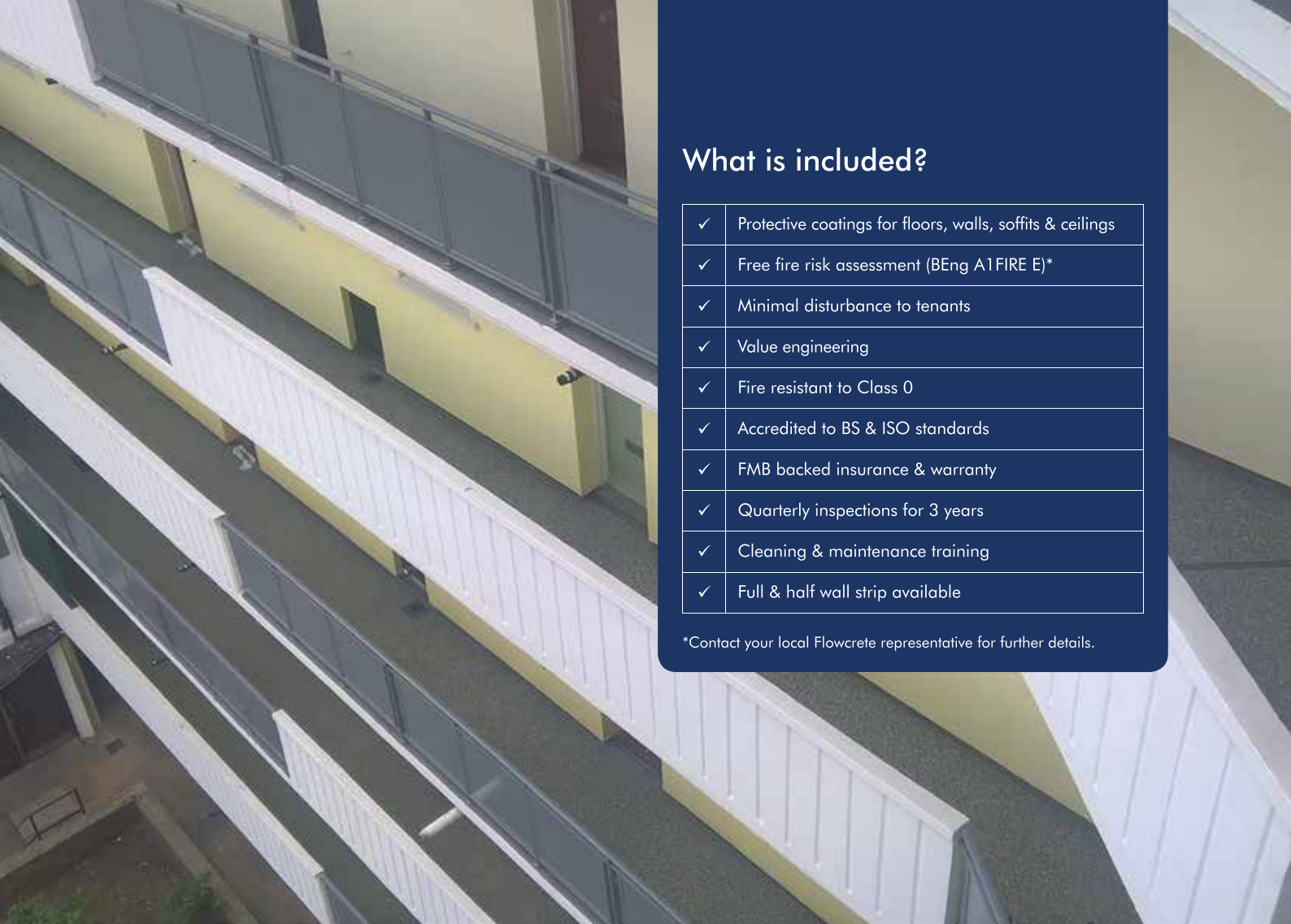
Hard Landscaping



Refuse Areas



Car Parks & Garages



What is included?

| | |
|---|---|
| ✓ | Protective coatings for floors, walls, soffits & ceilings |
| ✓ | Free fire risk assessment (BEng A1 FIRE E)* |
| ✓ | Minimal disturbance to tenants |
| ✓ | Value engineering |
| ✓ | Fire resistant to Class 0 |
| ✓ | Accredited to BS & ISO standards |
| ✓ | FMB backed insurance & warranty |
| ✓ | Quarterly inspections for 3 years |
| ✓ | Cleaning & maintenance training |
| ✓ | Full & half wall strip available |

*Contact your local Flowcrete representative for further details.

The History of Social Maintenance

In the 1960s, asphalt was frequently used by developers on social housing developments to protect and waterproof external concrete balconies as well as to provide an anti-slip surface.

As a result of exposure to the elements, the asphalt deteriorated over time, leading to water ingress into the concrete substrate. Water ingress results in the early onset of concrete cracking, steel corrosion and water damage to residential properties below.

Flowcrete UK's advanced protection systems can be laid on top of existing asphalt surfaces to treat and protect the structure.



* Assumes concrete compressive strength is greater than 25 N/mm²
 ** Cure times at temperatures between 0-30°C can be achieved by altering the quantity of catalyst used.
 For applications falling outside of this temperature range, please contact your local Flowcrete Technical Department. For a full Technical Profile, contact your local Technical Department.

Technical Profile

APPLICATION SUITABILITY

| | |
|-------------|-----------------|
| ✓ New Build | ✓ Refurbishment |
|-------------|-----------------|

TEMPERATURE RESISTANCE

Tolerant of sustained temperatures up to 50°C

FIRE RESISTANCE

| | |
|------------|---------------------|
| EN 13501-1 | C _{FL} -s1 |
|------------|---------------------|

WATER PERMEABILITY

| | |
|--------------|-------------------|
| Karsten Test | Nil (Impermeable) |
|--------------|-------------------|

SLIP RESISTANCE

| | |
|-----------|---|
| BS 7976-2 | Dry > Low Wet > 25 Moderate Slip potential |
|-----------|---|

CHEMICAL RESISTANCE

Contact your local Technical Department

IMPACT RESISTANCE

| | |
|-------------|-------|
| EN ISO 6272 | 10 Nm |
|-------------|-------|

WEAR RESISTANCE

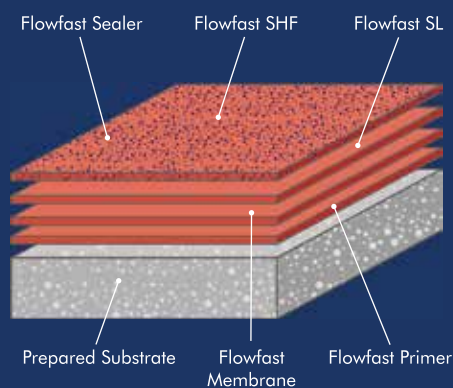
| | |
|------------|--------------------|
| EN 13892-5 | < 1cm ³ |
|------------|--------------------|

BOND STRENGTH

| | |
|------------|---------------------------|
| EN 13892-8 | > 2.5 N/mm ² * |
|------------|---------------------------|

SPEED OF CURE (PER LAYER): 0-30°C**

| | |
|------------------------------|-----------|
| Walk on | 1 Hour |
| Full Traffic & Chemical Cure | 2-3 Hours |



Flowfast SHF* (4 mm)

A fast cure methyl methacrylate (MMA) floor system with a decorative flake finish that can be installed on asphalt surfaces.

Ready to receive traffic in two hours, Flowfast SHF minimises disturbance to residents, while offering a durable finish that withstands chemical attack, impact and heavy traffic.



Fast Cure:

MMA additives speed up cure time, reducing construction schedules.



Attractive:

Offers extensive design potential to deliver the wow-factor underfoot.



Versatile:

Glitter flakes can be included within the resin to deliver a sparkling finish.



Seamless:

Delivers a hygienic seam-free surface that is easy to clean and maintain.



Hard-wearing:

Holds its own against impact, a variety of traffic and UV light.



Chemical Resistant:

Withstands potentially corrosive cleaning agents and spillages.

*Flowfast SHQ containing a decorative mix of coloured quartz aggregates is also available.



Standard Colours



Marine



Aqua



Iceberg



Smoke



Tortoiseshell



Nightshade

*Flowfast SHQ is also available with a quartz texture.
Contact your local representative for colours.

The Flowfast SHF Difference:

| | |
|---|--|
| ✓ | Flowfast SHF includes a separate elastomeric membrane layer for superior waterproofing and movement accommodation. |
| ✓ | Flowfast SHF is available in a special coloured flake blend as standard. |
| ✓ | Flowfast SHF provides a textured profile that can still be cleaned easily. |
| ✓ | Flowfast SHF offers a low risk of slipping when dry and moderate risk of slipping when wet, providing a safe surface underfoot for residents and visitors. |



Before & After

Deckshield Rapide SH

(4–5 mm)

A solvent free, fast cure methyl methacrylate deck coating system that minimises disturbance to residents.

Heavy duty Deckshield Rapide SH offers enhanced resistance to UV light, is weather resistant and available in a range of bright colours to transform external exposed walkways.



Fast Curing:

Reduced drying times to minimise disruption to car park users.



Attractive:

Brightens up dull, dark and musty car park environments.



Resistant:

Waterproof with high resistance to chemicals, fire and has low slip potential.



Reduces Noise:

Minimises unwanted noise from tyre squeal.



Heavy Duty:

Heavy duty version available for ramps, turning circles and drive aisles.

Standard Colours



Traffic Blue



Forest Green



Dark Grey



Tile Red



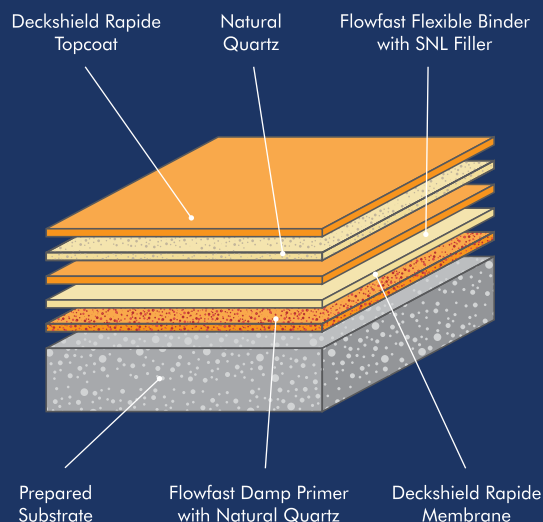
Mid Grey



Traffic Purple

Technical Profile

| REACTION TO FIRE | |
|--|---|
| EN 13501-1 | C _{FL} - s1 |
| CAPILLARY ABSORPTION & PERMEABILITY TO WATER | |
| EN 1062-3 | w < 0.1 kg/m ² × h ^{0.5} |
| SLIP / SKID RESISTANCE | |
| EN 13036-4 | Class III: >55 units Wet (outside) |
| RESISTANCE TO CHLORIDE IONS | |
| DOT BD47/94: Appendix B, Method B4,2(d) | No chloride ion penetration after 28 days |
| ADHESION BY PULL-OFF TEST | |
| EN 1542 | ≥ 1.5 N/mm ² (with or without trafficking) |
| ABRASION RESISTANCE | |
| EN ISO 5470-1 | Weight loss < 3000mg using H22 wheel, 1000 cycles, load 1000g |
| IMPACT RESISTANCE | |
| EN ISO 6272-1 | Class II: ≥ 10 Nm |
| CRACK BRIDGING ABILITY | |
| EN 1062-7 Method A, Table 6 | Class A3 (-20°C) |
| ARTIFICIAL WEATHERING | |
| EN 1062-11:2002 | No blistering, no cracking and no flaking after 2000h of accelerated UV exposure. |



The applied colours may differ from the examples shown. For a full colour chart and samples, contact your local Flowcrete office.

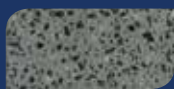
Standard Colours



Silver Grey



Stone Grey



Black Ash



Ash Grey



Ash Stone



Rhinstone

Technical Profile

SLIP RESISTANCE

BS 7976-2

Dry >40, Wet >40
(low slip potential)

IMPACT RESISTANCE

EN ISO 6272-1

13 Nm

TEMPERATURE RESISTANCE

Softens over 70°C, hardens on cooling

WATER PERMEABILITY

Karsten Test

Nil (Impermeable)

CHEMICAL RESISTANCE

Contact Technical Department. Good resistance to tea, coffee, cola, fruit juice, detergents and bleach.

ABRASION RESISTANCE

Dependant on aggregate selection. Use bauxite for heavier duty wear and vehicular traffic.

BOND STRENGTH

> 1.5 N/mm²

Naturewalk Pave (12—18 mm)

A seamless and slip resistant resin bound gravel system used to hard landscape outdoor areas.

Naturewalk Pave offers a seamless alternative to block paving, eliminates the cracks where weeds can grow and provides a durable replacement for loose stone or gravel.



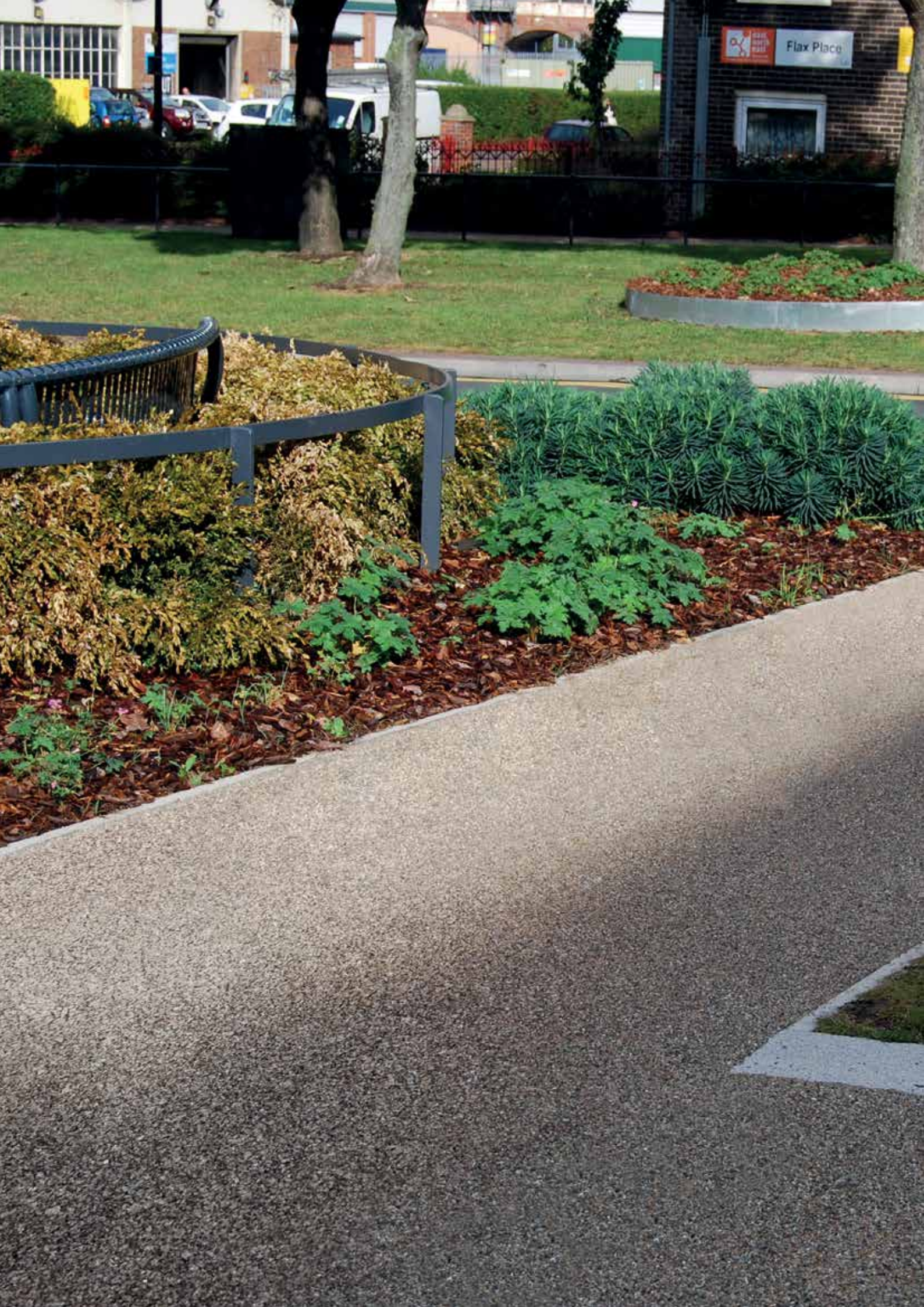
Eye-catching and available in a range of natural colour blends



Highly resistant to UV exposure



Impact and abrasion resistant





Tammscoat



A high build, water-based, acrylic coating used to protect and decorate sound masonry and concrete walls.

Tammscoat is available in white with either a smooth or fine (sanded) finish and is suitable for use on concrete, brick, stone and also on stucco.



Compliant with Class 0 for fire resistance



Excellent adhesion and protects from carbonation



Highly resistant to UV exposure and weatherproof

Technical Profile

DRY TIME

12 to 24 hours

WEATHEROMETER

ASTM G 26

6,000 hours - no cracking, crazing, chipping or flaking.

FREEZE THAW DURABILITY

ASTM C 666

300 cycles - 100.9%

SCALING RESISTANCE

ASTM 672

25 cycles - visual rating 0, scaling mass none.

SALT SPRAY RESISTANCE

ASTM B 117

2,000 hours 5% solution - no adhesion loss between 24°C and 17°C

IMPACT RESISTANCE

ASTM D 2794

No chipping

ABRASION RESISTANCE

ASTM C 418

0 mils abraded

For a full Technical Profile, contact your local Technical Department.

Technical Profile

DRY TIME (TACK-FREE)

AG-400 BASECOAT

AG-400 TOP COAT

5 to 8 hours

3 to 5 hours

FINAL CURE

AG-400 BASECOAT

AG-400 TOP COAT

2 to 7 days

3 to 5 days

FLEXIBILITY (3.2 MM MANDREL)

AG-400 BASECOAT

AG-400 TOP COAT

no cracks

no cracks

VOC CONTENT

AG-400 BASECOAT

AG-400 TOP COAT

118 g/L

330 g/L

ABRASION RESISTANCE (TABER ABRASION TEST)

AG-400 BASECOAT

AG-400 TOP COAT

54 mg loss

22 mg loss

Tamms AG 400*



A two-component urethane coating for indoor and outdoor use that has excellent anti-graffiti properties.

Tamms AG 400 combines superior chemical and abrasion resistance with excellent adhesion and weathering. It protects surfaces that must be cleaned frequently with cleaners and solvents to remove graffiti.



Graffiti resistant with no need for re-application once cleaned



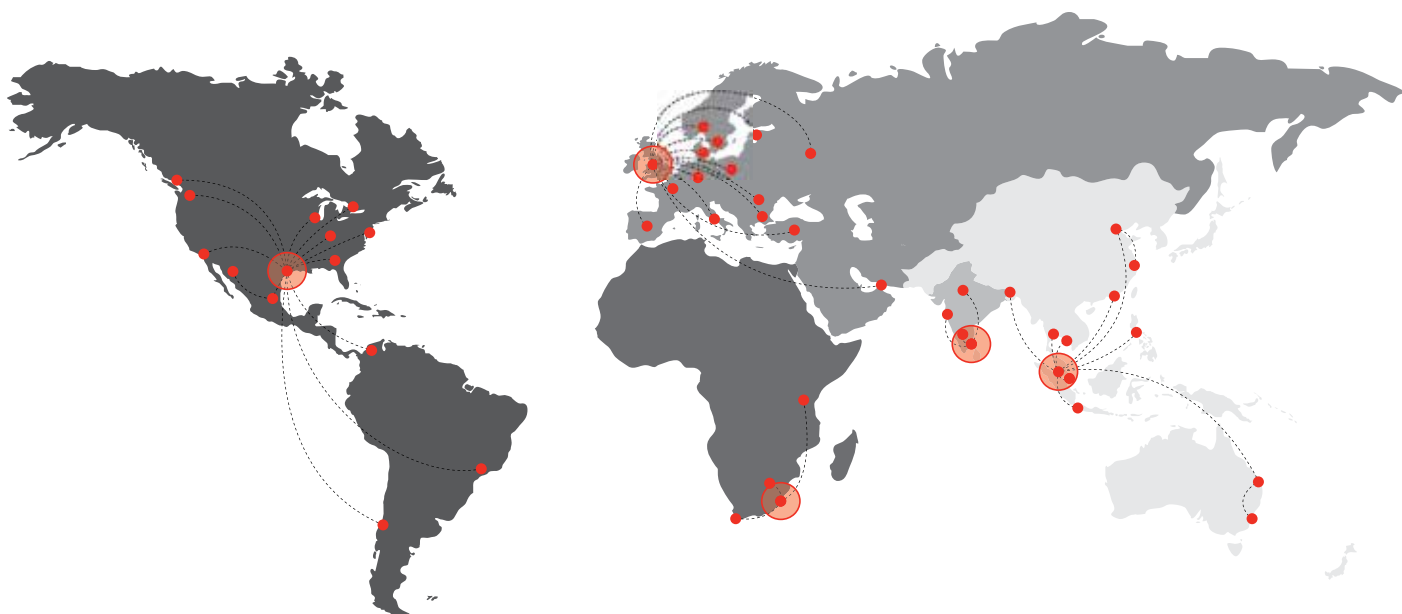
Excellent adhesion and protects from weathering. Compliant with Class 0



Highly resistant to UV exposure

* Tammscoat must be applied prior to Tamms AG 400

For a full Technical Profile, contact your local Technical Department.



Flowcrete

Flowcrete is the world's leading manufacturer of seamless resin floor, wall and coving solutions as well as a range of other specialist coating technologies with operations across the globe.

Europe & Middle East

| | | |
|---------------|--------------------|------------------------|
| Baltic States | +48 883 303 880 | latvia@flowcrete.com |
| Bulgaria | +359 898 61 58 31 | bulgaria@flowcrete.com |
| Denmark | +46 435 40 01 10 | denmark@flowcrete.com |
| France | +33 1 60 61 74 42 | france@flowcrete.com |
| Germany | +49 4187 50 29 470 | germany@flowcrete.com |
| Italy | +39 339 4853258 | italy@flowcrete.com |
| Norway | +47 64 86 08 30 | norway@flowcrete.com |
| Poland | +48 22 879 89 07 | poland@flowcrete.com |
| Romania | +40 766 596 991 | romania@flowcrete.com |
| Russia | +7 495 645 83 18 | rus@flowcrete.com |
| Spain | +34 937 07 0872 | spain@flowcrete.com |
| Sweden | +46 435 40 01 10 | sweden@flowcrete.com |
| Turkey | +90 212 327 97 97 | turkey@flowcrete.com |
| UAE | +971 4 886 4728 | uae@flowcrete.com |
| UK | +44 1270 753 000 | uk@flowcrete.com |

Africa

| | | |
|--------------|------------------|---------------------------|
| East Africa | +254 20 682 1011 | eastafrika@flowcrete.com |
| South Africa | +27 31 461 3411 | southafrica@flowcrete.com |

India

| | | |
|-------|------------------|---------------------|
| India | +91 44 4202 9831 | india@flowcrete.com |
|-------|------------------|---------------------|

Asia Pacific

| | | |
|-------------|------------------|---------------------------|
| Australia | +61 7 3205 7115 | australia@flowcrete.com |
| Bangladesh | +88 02 9857222 | bangladesh@flowcrete.com |
| China | +86 10 8472 1912 | china@flowcrete.com |
| Hong Kong | +852 2795 0478 | hongkong@flowcrete.com |
| Indonesia | +62 21 252 3201 | indonesia@flowcrete.com |
| Malaysia | +60 3 6277 9575 | malaysia@flowcrete.com |
| Philippines | +63 917 514 2696 | philippines@flowcrete.com |
| Singapore | +65 6848 7166 | singapore@flowcrete.com |
| Thailand | +66 2539 3424 | thailand@flowcrete.com |
| Vietnam | +84 8 6287 0846 | vietnam@flowcrete.com |

Americas

| | | |
|----------|------------------|------------------------|
| Brazil | +55 11 3230 1107 | brazil@flowcrete.com |
| Canada | +1 800 218 1850 | canada@flowcrete.com |
| Chile | +56 2 2938 1962 | chile@flowcrete.com |
| Colombia | +57 1 381 9254 | colombia@flowcrete.com |
| Mexico | +01 800 099 0468 | mexico@flowcrete.com |
| USA | +1 936 539 6700 | usa@flowcrete.com |

*Whilst every care has been taken to ensure that the information included in this document was accurate at the time of printing, Flowcrete reserves the right to change product specifications at any time without prior notice. The photographs and colours reproduced in this publication are within the constraints of the printing process and are not to be used for matching purposes. All photographs are used for approximate representation only and may not show the actual products on offer. E&OE.